

# David Hall 61 Fairmount Rd London SW2 OI 674 0593

## PROGRESSIVE RECESSION (1974) Equipment and materials requirements

Installation at the Serpentine Gallery, May 1975.

### Equipment:

9 x basic CCTV cameras (B/W)  
7 x 10mm lenses  
2 x Zoom lenses  
9 x 20/24" monitors (B/W)(all monitors should be one size)  
18 x UHF coaxial plugs

Coaxial cable:	camera	1	to	monitor	1	=	3ft
	"	2	"	"	3	=	5ft
	"	3	"	"	5	=	9ft
	"	4	"	"	7	=	13ft
	"	5	"	"	2	=	13ft
	"	6	"	"	4	=	9ft
	"	7	"	"	6	=	5ft
	"	8	"	"	9	=	38ft
	"	9	"	"	8	=	38ft

133ft total

(Coaxial cable lengths should be preferably made up, with plugs, to to above spec.) Approx 6 extension mains leads will also be needed.

### Construction material:

Shelves for monitors (cameras sit on top of monitors):

One length for monitors 1-7, 18ft x 2ft x  $\frac{3}{4}$ " chipboard, and two separate ones for monitors 8 and 9 each 2'6" x 2ft chipboard (all made from 2 8ft x 4ft sheets). Shelf supports made from 2" x 2" timber: one frame 18ft x 2ft under long shelf, with vertical uprights every 3ft front and back, each 4ft high. 4 x 4ft uprights supporting shelves for monitors 8 and 9 with 2'6" x 2ft frames under each. (total 2"x2" for shelf supports 146ft). Base of legs held either by fixing to floor or by tying all round with 2" x 1" (total approx 60ft).

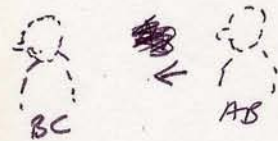
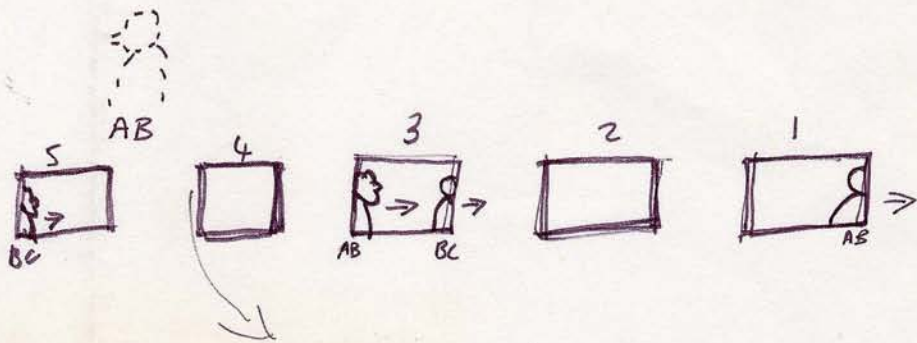
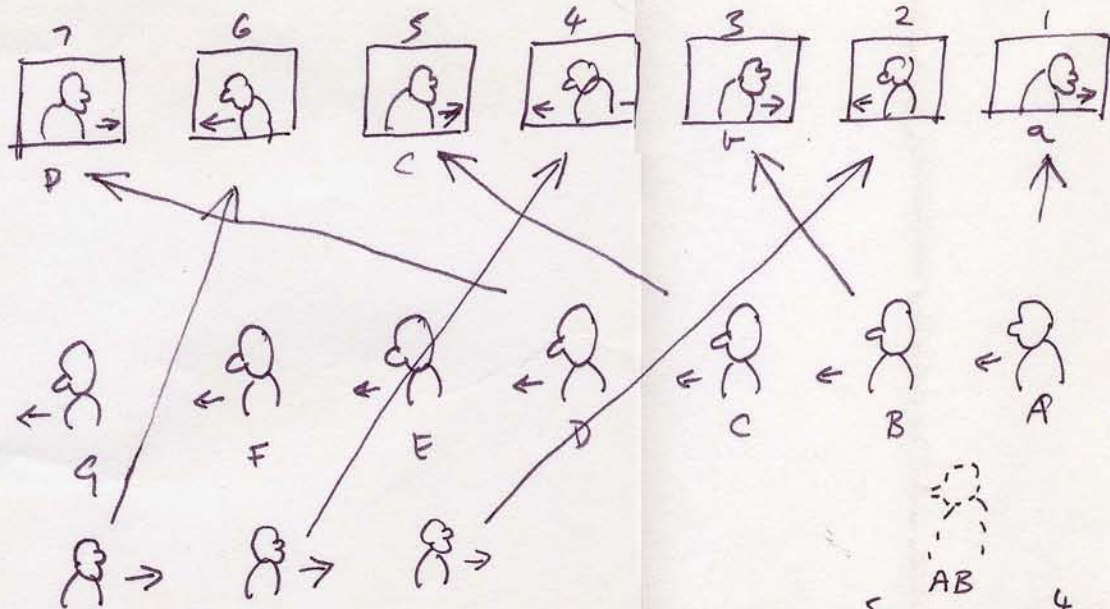
The need for this shelf construction is eliminated if the appropriate number of 4ft high 'plinths' are available. (Or conventional metal stands).

### Corridor construction:

Assuming that an existing corner is available as a backing and end wall (ie. monitors 1-7 back up to existing wall, and monitor 8 to end wall) the requirement will be to build a hardboard partition on only one side and an end piece.

# PROGRESSIVE RECESSION #1

NOTE MONITOR REVERSED ACTION OF IMAGE



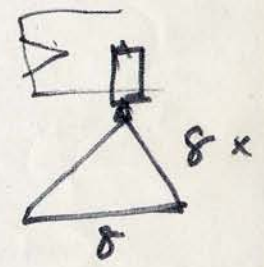
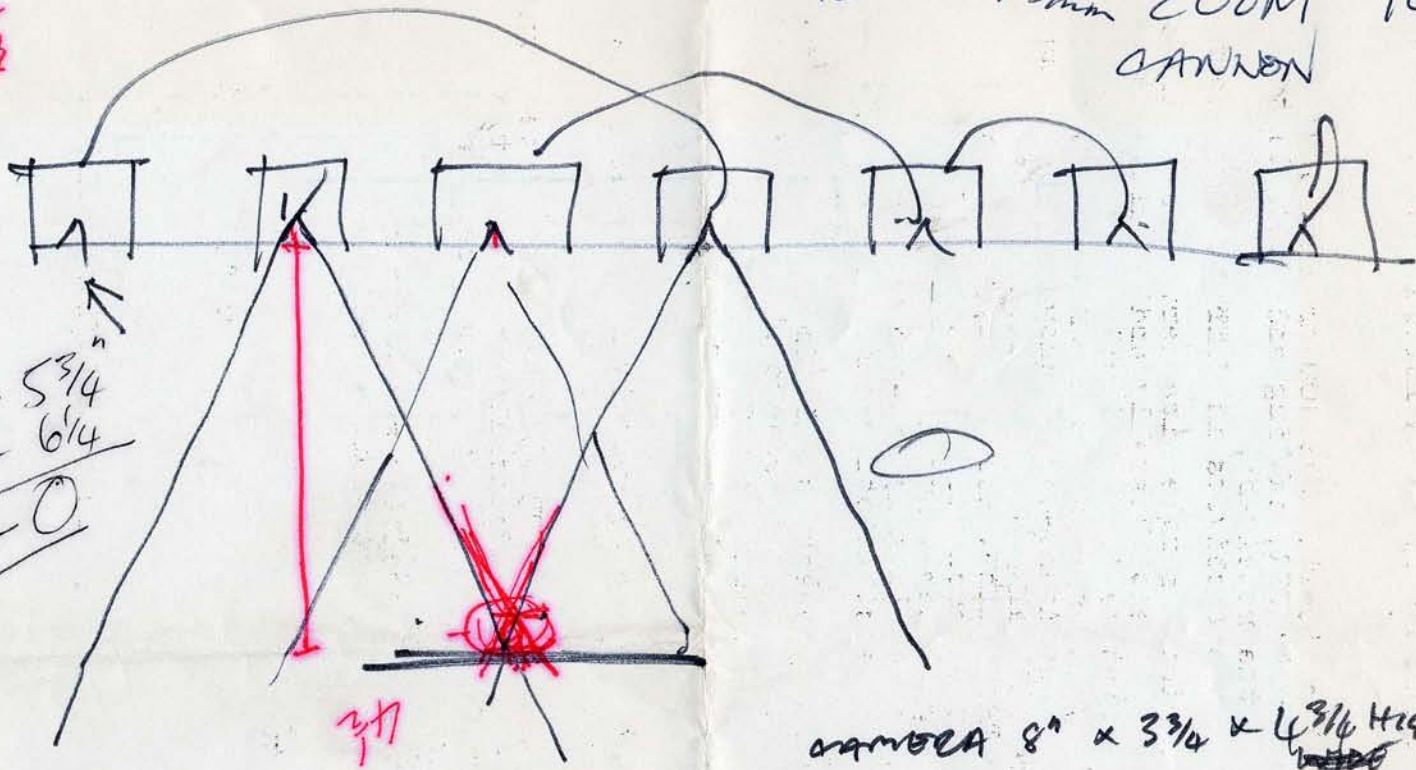
BETWEEN LENS FIELDS

ONE ADDED PERCEPTUAL

ADDED TO THIS IS THE PERCEPTUAL COUNTERACTION OF EACH INDIVIDUAL MONITORED IMAGE

IN ADDITION  
~~ADDED TO THIS IS THE FACT THAT~~  
 INDIVIDUAL (ON MONS 1-7)  
 EACH MONITORED IMAGE WILL ~~COUNTERACT~~ <sup>PERCEPTUALLY</sup> ~~PERCEPTUALLY~~ <sup>COUNTERACT</sup> THE ~~OVERALL~~ <sup>OVERALL</sup> ~~PROGRESSIONS~~ <sup>PROGRESSIONS</sup> BY MOVING IN ~~THE REVERSE~~ <sup>THE REVERSE</sup> DIRECTION TO A THE VIEWER <sup>THAT OF THE</sup>  
 (ACCELERATED)  
 IE. AS THE VIEWER MOVES ALONG THE CORNER (IS AN 'IE' NEEDED?)

12-5-75mm ZOOM  
CANNON 10' 0" x 11' 0"  
OR x 56"

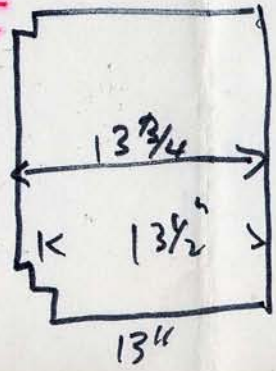
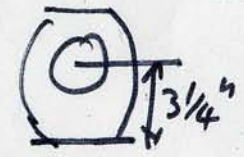


CAMERA 8" x 3 3/4" x 4 3/4" HIGH

APPROX 1:1 RATIO

TEMRON 8-5mm  
CTC 4000  
MONS  
ITC 201T

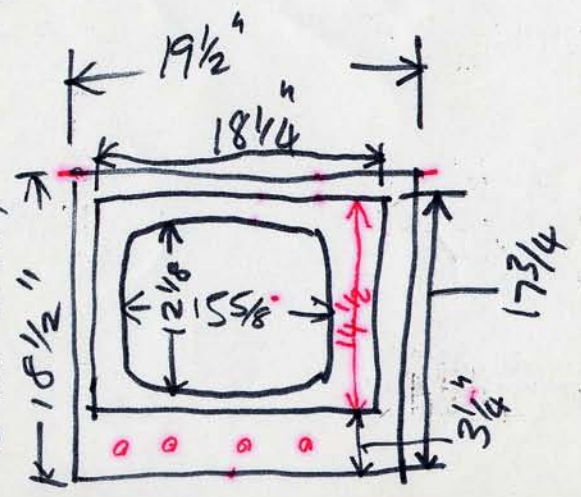
SONY  
3230?



∴ LENS FROM TOP BENCH  

$$= \frac{18 \frac{9}{16}}{1 \frac{1}{16}}$$

$$= 20 \frac{3}{16}$$



SIDE TO CENTER  
10 1/2

17 3/4  
3 1/4  
14 1/2

TO TOP HEIGHT



2' - 5 3/4  
6 1/4  
4 - 0

9 1/8  
3 2 7/8  
4 - 0

14 1/2  
12 1/8  
2 3/8

2 3/4  
2 3/4  
5 1/8

David Hall