

HARRIS

MUSEUM & ART GALLERY

PREVIEW

OCTOBER - DECEMBER 1990



CALENDAR

OCTOBER - DECEMBER 1990

15 October
DUB POETRY WORKSHOP

1 November
THOMAS WADE Exhibition opens

10 November
VISIONS AND TRANSMISSIONS
Video Installation Exhibition opens

28 - 29 November
WORKING WITH VIDEO
Training days for gallery workers

30 November - 1 December
PRESTON ART - HANDING IN DAYS
11:00am - 4:00pm

1 December
BITS OF COLOUR Exhibition opens

15 December
PRESTON ART Exhibition opens

15 December
ART FAIR 10:30am - 4:00pm

24, 25, 26 December, 1 January
CHRISTMAS AND NEW YEAR CLOSURES

PROUD PRESTON

A PHOTOGRAPHIC VIEW

15 September - 5 January 1991

An opportunity to take a nostalgic look at old Preston through photographs from the Museum's collection. This exhibition has been selected and researched by the Museum's volunteer Guides. Their choice reflects aspects of the town that either have special memories for Prestonians or give the town its particular character. There is a special quiz for younger visitors to the exhibition.



A trip out from Addisons, Church Street c 1905

DUB TRANSITION

DENZIL FORRESTER:
A DECADE OF PAINTINGS 1980 - 90

22 September - 3 November



Winston Rose Study charcoal on paper

Denzil Forrester's paintings come straight from his experiences as a Black person living in Britain. Brought up in Grenada, the colour and life of the Caribbean are still present in his pictures. These huge, dazzling paintings combine images of Carnival with scenes of the charged atmosphere of London's West Indian blues clubs.

Organised with generous support from North West Arts and Black Art Alliance.



EVENTS

15 October Dub Poetry Workshop for secondary classes with poet Eugene Lange and Denzil Forrester.

Exhibition information sheets are available for teachers wishing to bring classes to the exhibition. There will be a charge to cover the cost of colour reproductions if required.

VISIONS & TRANSMISSIONS

THREE NEW VIDEO INSTALLATIONS

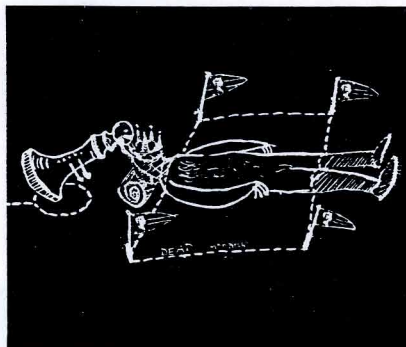
10 November - 1 December

CLASS - An installation by Andrew Stones

In this "classroom" the blackboard has been replaced by a video projector. Projected images explore the formative influences of a child's education. This installation by Andrew Stones was commissioned in collaboration with Phoenix Arts and Leicester Film & Video Festival and generously sponsored by Jewsons.

JEWSON

PHOENIX



Dead Monarch detail, from projected frieze 1990

VIDEO PORTRAIT OF SHOBANA JEYASINGH Installation by Marty St James Anne Wilson

Unlike traditional portraits this monumental image of a classical Indian dancer, Shobana Jeyasingh, can suddenly move her head, wink or even start dancing! This impressive work has been commissioned in collaboration with Camden Arts & Entertainment.

Eau d'Artifice and the Video Portrait of Shobana Jeyasingh have been made possible by the generous support of Samuelson Communications Ltd.

Visions & Transmissions is generously sponsored by Persimmon Homes (North West) Ltd.



Samuelson
COMMUNICATIONS LTD
EQUIPMENT · PLUS

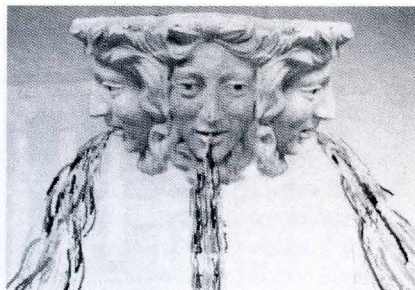
 **PERSIMMON HOMES**



Detail from video installation

EAU D'ARTIFICE
Installation by Chris Meigh
Andrews

Nothing is real! Forming a dramatic centrepiece to the exhibition, this fountain is made up of 35 video screens and the water which cascades down the sides, has been manipulated by computer.



Detail from video installation

EVENTS

Please contact the Exhibitions Officer for details of activities for schools, colleges and community groups during this exhibition.

28 - 29 November Working with Video Training days for gallery workers to learn about using video and audio-visual equipment, organised with Film & Video Umbrella, London Video Access & Moviola. To book places please contact the Exhibitions Officer, 58248 ext. 14

P R E S T O N A R T

ANNUAL EXHIBITION OF PRESTON ART SOCIETY
PLUS OPEN SECTION
15 December - 10 January

Preston Art is bigger and better this year. The **Open Section** is in two parts: for art students and for amateur artists. The Art Society presents an impressive selection of new work by members, plus a special display of watercolours by Dr. Herbert Wilkinson who sadly died recently. He was Chairman of the Society for ten years.

Handing-in days for **Preston Art** are on 30 November and 1 December between 11:00am - 4:00pm. Application forms for the **Open Section** are available from the Museum Office after 19 November.

Pictures not selected for **Preston Art** **MUST** be collected by 12 December. Exhibited work **MUST** be collected by 14 January.

EVENTS

15 December - Art Fair, 10:30am - 4:00pm A picture by a local artist makes a unique Christmas gift. Come and browse round the Art Fair, there is sure to be something to catch your eye! If you would like to show work in the Art Fair please contact the Exhibitions Officer, 58248 ext. 14.

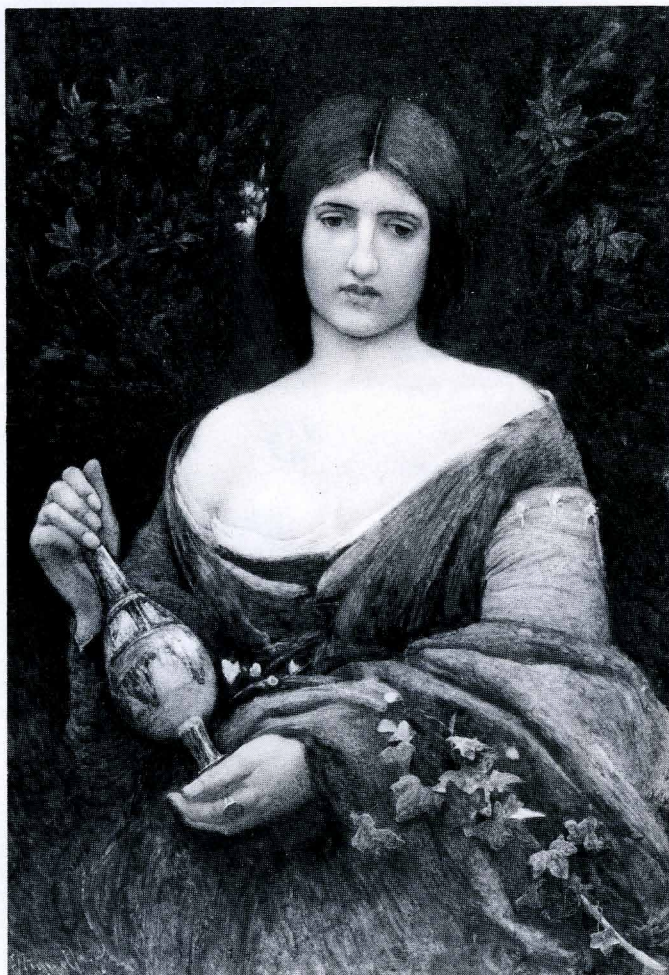
IN FOCUS

'BITS OF COLOUR'

From 1 December

In the watercolour gallery during the coming year we will be exhibiting an exciting and colourful selection of works on paper. This

exhibition, on the theme of artists use of colour, features work by many of the finest watercolour artists of the last 250 years. J M W Turner and William Henry Hunt are among the old favourites, and there is a chance to see innovative contemporary paintings by Michael Sandle, Bruce McLean and Ian McKeever.



G. J. Pinwell - Sweet Melancholy, - watercolour

THOMAS WADE

Preston's Pre-Raphaelite

1 November - 31 March

This exhibition is drawn from our own collection of oils and watercolours by the Preston born artist Thomas Wade (1828-91), together with works generously loaned from a private collection. It will be the first time that a representative selection of the artist's work has been seen since his death. Wade lived and worked in Preston in the 1860s and 70s. His paintings give us an unusually accurate impression of the domestic and working conditions of those living on the land in mid-Victorian Lancashire.



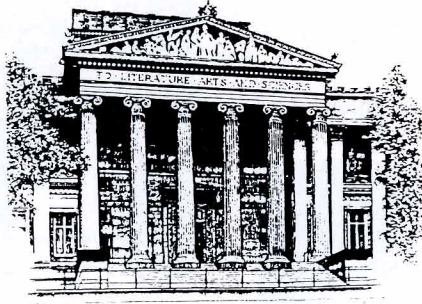
Thomas Wade - *The Poacher's Home* oil on canvas

EXHIBITION UPDATE

Old Yarns Re-spun-Preston & the
Cotton Industry 1991

August saw the completion of the Museum's oral history project which involved staff, volunteers and the N W Sound Archive in recording the recollections of Preston residents who had worked in the textile industry. Long after the exhibition has finished, these recordings will become a valuable part of the Social History collection, creating a resource for schools and local

historians in years to come. The museum has had an enthusiastic response from members of the public to its appeal for memorabilia relating to the cotton industry. Items which have been lent or donated for the displays include photographs, hand tools, books of cuttings, fabric samples, dresses, shuttles and bobbins, sheets and even the date stone from Horrockses Yellow Factory 1791.



THE HARRIS MUSEUM AND ART GALLERY is situated on the Market Square close to the main Post Office, Town Hall and Guild Hall. The nearest car park is the Bus Station Car Park.

In addition to the programme of temporary exhibitions, the Harris houses fine collections of British nineteenth and twentieth century paintings and sculpture, costume and decorative art, and the *Story of Preston* gallery traces the development of the town over 12,000 years.

COMMUNITY GALLERY: Local societies, charities and educational organisations are invited to mount their own exhibitions in the Community Gallery. For details and booking forms contact the Museum Office.

OPENING HOURS: Monday to Saturday 10.00am - 5.00pm.

PLEASE NOTE: The Museum and Gallery will be CLOSED on the 24, 25, 26 December, 1 January 1991.

DISABLED ACCESS: The building has a ramped entrance, a passenger lift to the two main floors and a stair lift to both mezzanine levels. Disabled toilet facilities are available in the Community Gallery. A wheelchair is available on request. For visually impaired visitors there is an audio guide to the building plus tactile plans of all floors.

MUSEUM SHOP: Come and buy your Christmas cards and gifts from the Museum Shop, choose from the wide range of publications, prints, postcards and souvenirs.

Open 10.30am - 4.15pm Monday - Saturday (closed 1.30pm - 2.15pm on Thursday).

ROTUNDA CAFE: Open for light refreshments 10.45am - 4.00pm Monday - Saturday.

FRIENDS OF THE MUSEUM: Friends raise money to support many aspects of the Harris Museum and Art Gallery's activities. Throughout the year they can also participate in social events. If you would like to join the Friends please contact the Museum Office.

VOLUNTEER GUIDES: The volunteer Guides provide a valuable service introducing visiting groups to the Museum and Art Gallery and also help staff behind the scenes. If you would like to join the Guides please contact the Museum Office.

HARRIS

MUSEUM & ART GALLERY

Market Square, Preston, Lancs PR1 2PP
Telephone (0772) 58248

Supported by
Lancashire
County
Council 

Preston
Borough
Council
LEISURE SERVICES
DEPARTMENT

Arts Council Funded